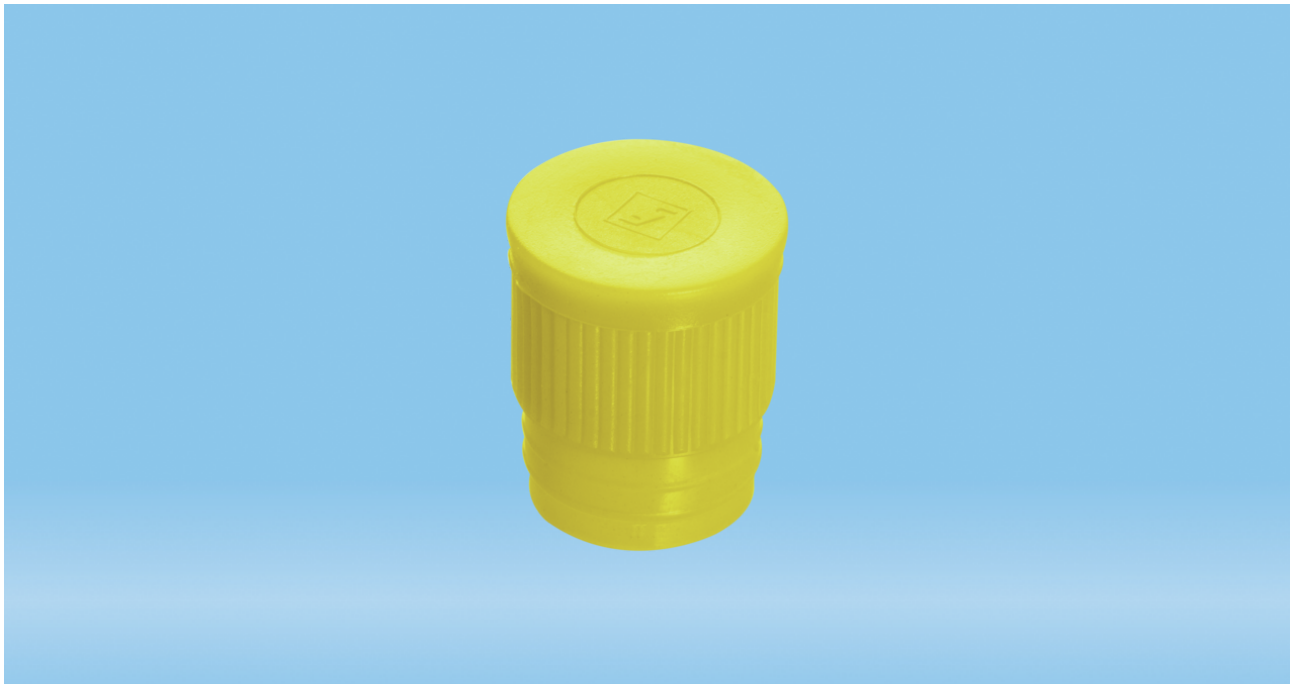




**Product Specification**  
**Push cap, yellow, suitable for tubes Ø 15.5, 16,  
16.5, 16.8 and 17 mm**



**Product description**

Order number 65.793.514  
Product description Push cap, yellow, suitable for tubes Ø 15.5, 16, 16.5, 16.8 and 17 mm, 1,000 piece(s)/bag

**Product characteristics**

Cap standard cap  
Closure type push cap  
Suitable for tubes Ø 15.5, 16, 16.5, 16.8 and 17 mm

**Material & colours**

Product material Low Density Polyethylene (LD-PE)  
Colour of product yellow

**Purity & certification**

Product category no medical device | IVD  
Batched no

This is the current specification for this product. Sarstedt reserves the right to make changes, in full or in part, at any time without prior notification.





**Product Specification**  
**Push cap, yellow, suitable for tubes Ø 15.5, 16,  
16.5, 16.8 and 17 mm**

**Packaging**

Minimum order qty.	5000
Type of smallest subpackaging	bag
Piece(s) / inner box	1000
Piece (s) / outer case	5000
Piece(s) / pallet	180000
Depth of case	398 mm
Width of case	398 mm
Height of case	265 mm
Case volume	0.042 cbm
Weight of product	0.0014 kg
Weight of case	7.56 kg
EAN of inner box	4038917120845
EAN case	4038917017480

This is the current specification for this product. Sarstedt reserves the right to make changes, in full or in part, at any time without prior notification.

