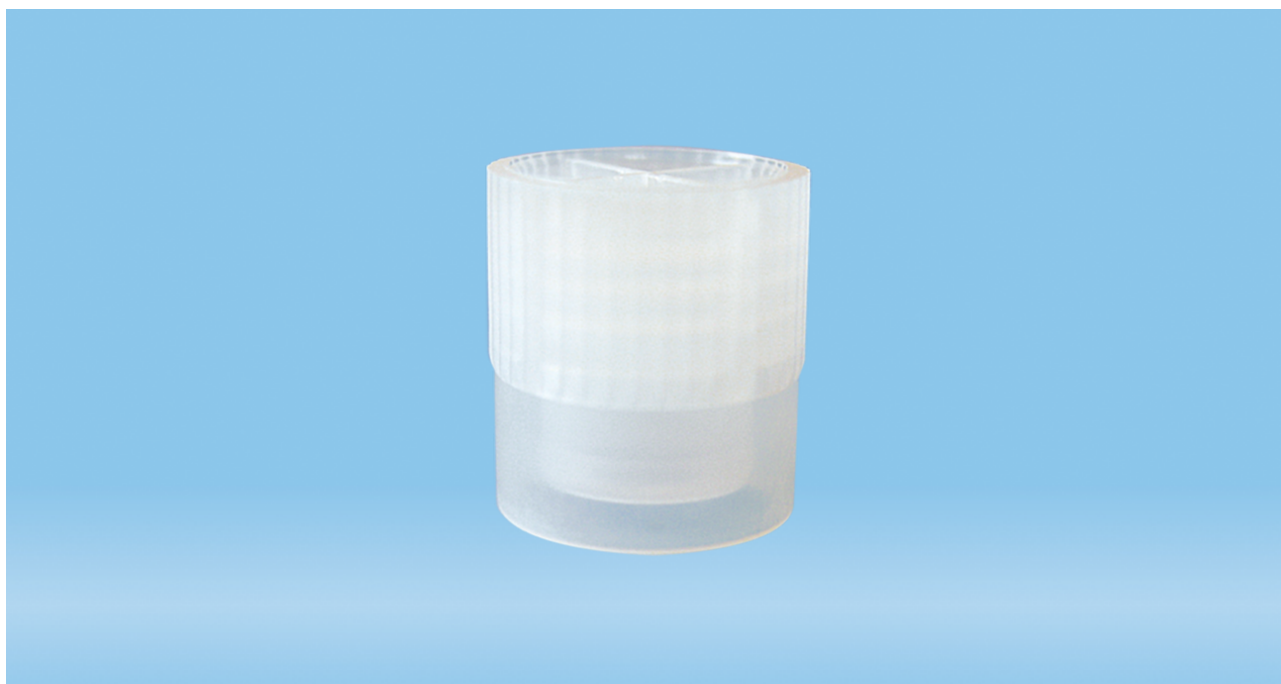




**Product Specification**  
**Skirted push cap, natural, suitable for tubes Ø 11.5 and 12 mm**

**Page 1**



**Product description**

Order number	65.719
Product description	Skirted push cap, natural, suitable for tubes Ø 11.5 and 12 mm, 1,000 piece(s)/bag

**Product characteristics**

Cap	Skirted push cap
Closure type	push cap
Suitable for	tubes Ø 11.5 and 12 mm

**Material & colours**

Product material	Low Density Polyethylene (LD-PE)
Colour of product	natural

**Purity & certification**

Product category	no medical device   IVD
Batched	no

This is the current specification for this product. Sarstedt reserves the right to make changes, in full or in part, at any time without prior notification.





**Product Specification**  
**Skirted push cap, natural, suitable for tubes Ø**  
**11.5 and 12 mm**

**Page 2**

**Packaging**

Minimum order qty.	5000
Type of smallest subpackaging	bag
Piece(s) / inner box	1000
Piece (s) / outer case	5000
Piece(s) / pallet	320000
Depth of case	398 mm
Width of case	298 mm
Height of case	215 mm
Case volume	0.0255 cbm
Weight of product	0.0009 kg
Weight of case	5.04 kg
EAN of inner box	4038917083676
EAN case	4038917002578

This is the current specification for this product. Sarstedt reserves the right to make changes, in full or in part, at any time without prior notification.

Date of issue:  
2024-07-18

This document was prepared by EDP support and is valid without signature.



**SARSTEDT**