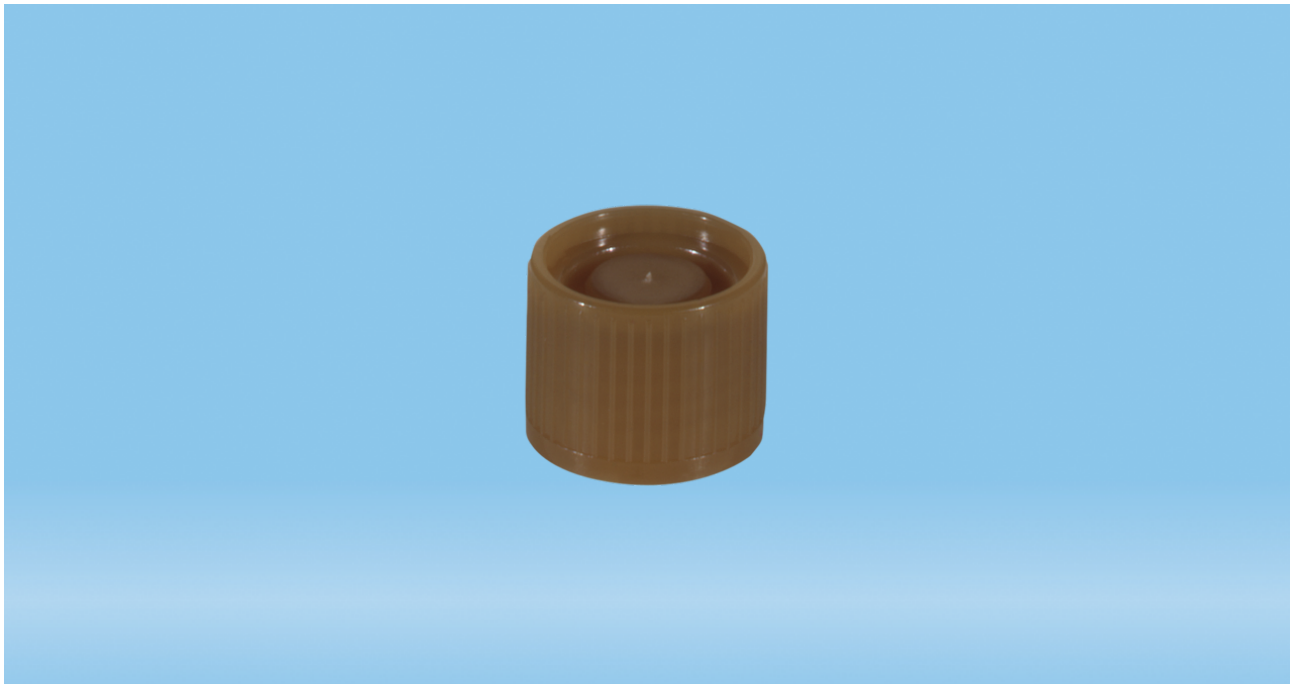




**Product Specification**  
**Screw cap, brown, suitable for tubes Ø 16-16.5 mm**

**Page 1**



**Product description**

Order number 65.176.023  
Product description Screw cap, brown, suitable for tubes Ø 16-16.5 mm, 1,000 piece(s)/bag

**Product characteristics**

Closure type screw cap  
Suitable for tubes Ø 16-16.5 mm

**Material & colours**

Product material High Density Polyethylene (HD-PE)  
Colour of product brown

**Purity & certification**

Product category no medical device | IVD  
Batched yes

This is the current specification for this product. Sarstedt reserves the right to make changes, in full or in part, at any time without prior notification.





**Product Specification**  
**Screw cap, brown, suitable for tubes Ø 16-16.5 mm**

**Page 2**

**Packaging**

Minimum order qty.	1000
Type of smallest subpackaging	bag
Piece(s) / inner box	1000
Piece (s) / outer case	5000
Piece(s) / pallet	200000
Case volume	0.0415 cbm
Weight of product	0.0009 kg
Weight of case	7.15 kg
EAN of inner box	4038917101585
EAN case	4038917070935

This is the current specification for this product. Sarstedt reserves the right to make changes, in full or in part, at any time without prior notification.

Date of issue:  
2024-07-17

This document was prepared by EDP support and is valid without signature.



**SARSTEDT**