

# Hello digital!

Digitalise your pre-analytics





# Win-win

## Pre-barcode and S4DX

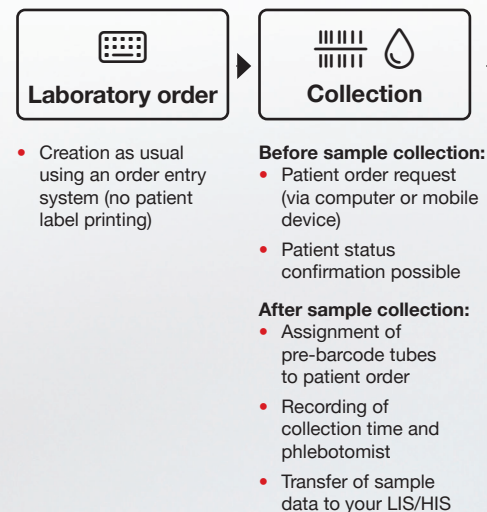


"No more labelling. This saves me time while also minimising the risk of mixing up patients, which allows me to feel secure."

The interaction between pre-barcode sample tubes and the S4DX system in a digital process allows for the collection, securing and visualisation of comprehensive pre-analytical data such as sample and patient status or transport conditions. This added value for your data provides transparency and security while also saving you time. This also does away with tedious, error-prone labelling, thus providing benefits for your patients' safety and takes the strain off your staff.

Digitalise your pre-analytics with pioneering solutions from SARSTEDT. Hello digital!

### Digital pre-analytics processes





“Sample transportation is monitored via sensors. This data is critical for our automated sample receipt based on our QM guidelines.”



“I can see the relevant information on patient and sample status here in the laboratory in real time.”



“More data means more information. I need the information base to be as comprehensive as possible for my diagnosis.”



- Monitoring: Recording of pick-up time, temperature, vibrations and transport duration

(You can also choose to book digital transport monitoring via the S4DX courier app)



- Transmission of all transport data to your LIS/HIS
- Automatic separation/identification of pre-analytically abnormal samples



- Added value for data: Abnormalities can be compared with gathered pre-analytical data and assessed

Find out more about digital pre-analytics



[digital.sarstedt.com](https://digital.sarstedt.com)

### Let's scan

You can use S4DX to register pre-barcode sample tubes via either the app or a handheld scanner.





# pre-barcode

## The next step towards digital pre-analytics



With the pre-barcode sample tubes, you'll be taking the next step towards a digital future for your pre-analytics. Minimise sources of errors, streamline processes and ensure the quality of your samples.

### Simply secure

- The direct assignment of patient to samples prevents mix-ups due to incorrectly attached labels. This increases your patients' safety and saves you from having to repeat sample collection.
- Your automated sample processing in the laboratory is supported thanks to pre-barcode sample tubes and thus optimally placed barcodes – sample tubes missing barcodes or with incorrectly attached barcodes become a thing of the past. This accelerates your automation while reducing the likelihood of errors.
- Pre-barcode sample tubes are digitally linked with a patient order. This facilitates the collection of comprehensive pre-analytical data on sample status, patient status and transport conditions. This data can be used to compensate for abnormalities during analysis.



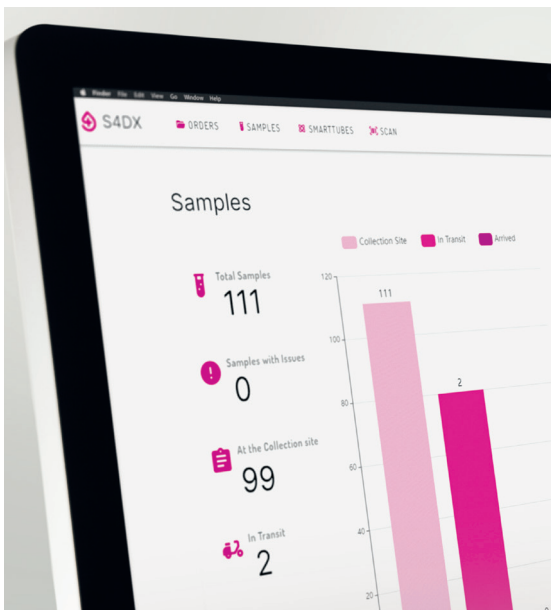
### Process optimisation begins even before sample collection

Indeed, there is no longer any need to manually create patient labels, attach them to the sample tubes or assign them to a patient order. Freed-up resources can be allocated to different areas and costs reduced.

For collection, simply reach into the box with the pre-barcode sample tubes and use any S-Monovette® or Urine-Monovette® to collect samples.

#### **SARSTEDT pre-barcode**

No attaching labels, greater safety, more time for the things that matter – lower costs



# S4DX

Create and use added data value



The S4DX system provides you with quality-relevant data on sample transport as well as important information about patient and sample status – a milestone for assessing diagnostic results.

## More information about transport conditions

The S4DX courier app is used to record data on transport temperature and vibrations via the S4DX data logger; this can then be read out contactlessly via a gateway installed at sample delivery site.

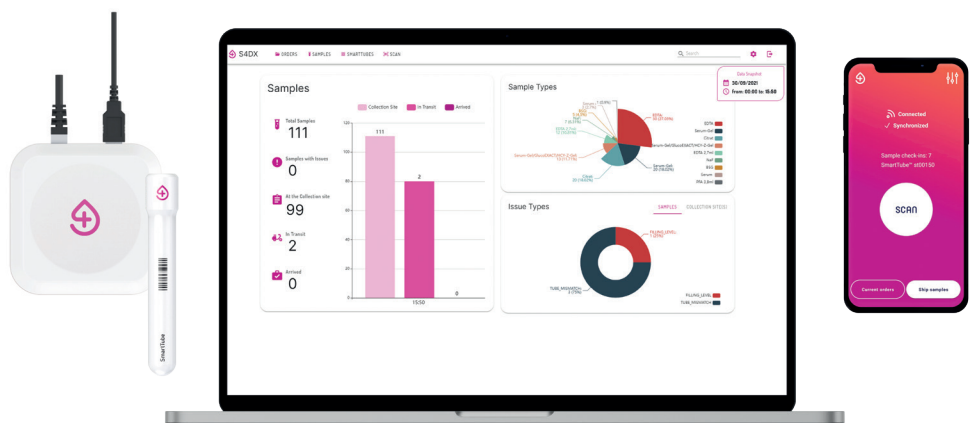
## Added value with the S4DX system

S4DX allows you to access all relevant patient or sample data and use it to evaluate sample quality in real time. In addition to individual information on patient or sample status, data such as collection time, the person performing the collection, batch, expiry date and preparation of the sample tubes is recorded digitally in your system.

The S4DX system can be used on both mobile devices and stationary computers.

## S4DX system

Close the data gaps between sample collection and laboratory analysis



Here's how digital pre-analytics works:

# Pre-barcode & S4DX system

Smart. Safe. Digital.

Find out more  
about digital  
pre-analytics



[digital.sarstedt.com](https://digital.sarstedt.com)

Utilise all the advantages of digital pre-analytics



- ✓ Reduce costs and errors using pre-barcode sample tubes
- ✓ Improve the basis for medical decisions thanks to added value for data
- ✓ Optimise your pre-analytical workflow

## pre-barcode

- Avoid patient and sample mix-ups
- Save time and resources
- Optimise automation through barcodes attached according to the CLSI AUTO02 standard

## S4DX

- Record patient and sample status during collection
- Monitor sample transport
- Process quality- and diagnosis-relevant data and visualise it in real time
- Optimise laboratory processes and reduce costs

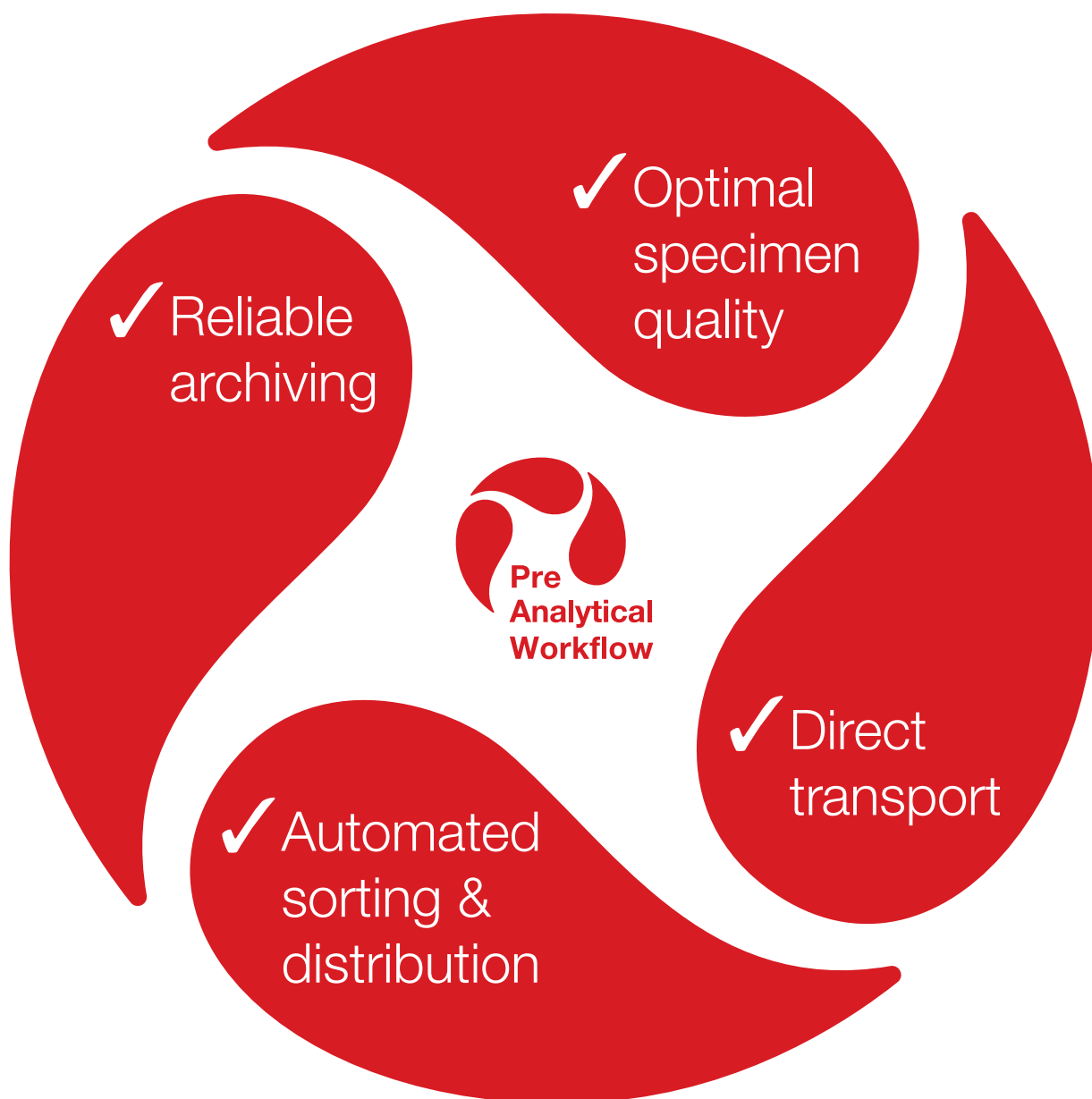
# Pre-analytical workflow made by SARSTEDT

Utilise the synergy of our  
coordinated systems.

Discover the 360°  
solutions for your  
pre-analytics from  
SARSTEDT



[workflow.sarstedt.com](http://workflow.sarstedt.com)



## SARSTEDT AG & Co. KG

P.O. Box 12 20

D-51582 Nümbrecht

Phone: +49 2293 305 0

Fax: +49 2293 305 3992

Customer Service Germany

Phone +49 (0)800 0 83 305 0

[export@sarstedt.com](mailto:export@sarstedt.com)

[www.sarstedt.com](http://www.sarstedt.com)



More information, videos and advice:  
[digital.sarstedt.com](http://digital.sarstedt.com)

If you have any questions:  
We'd be happy to help!

Visit our website: [www.sarstedt.com](http://www.sarstedt.com)